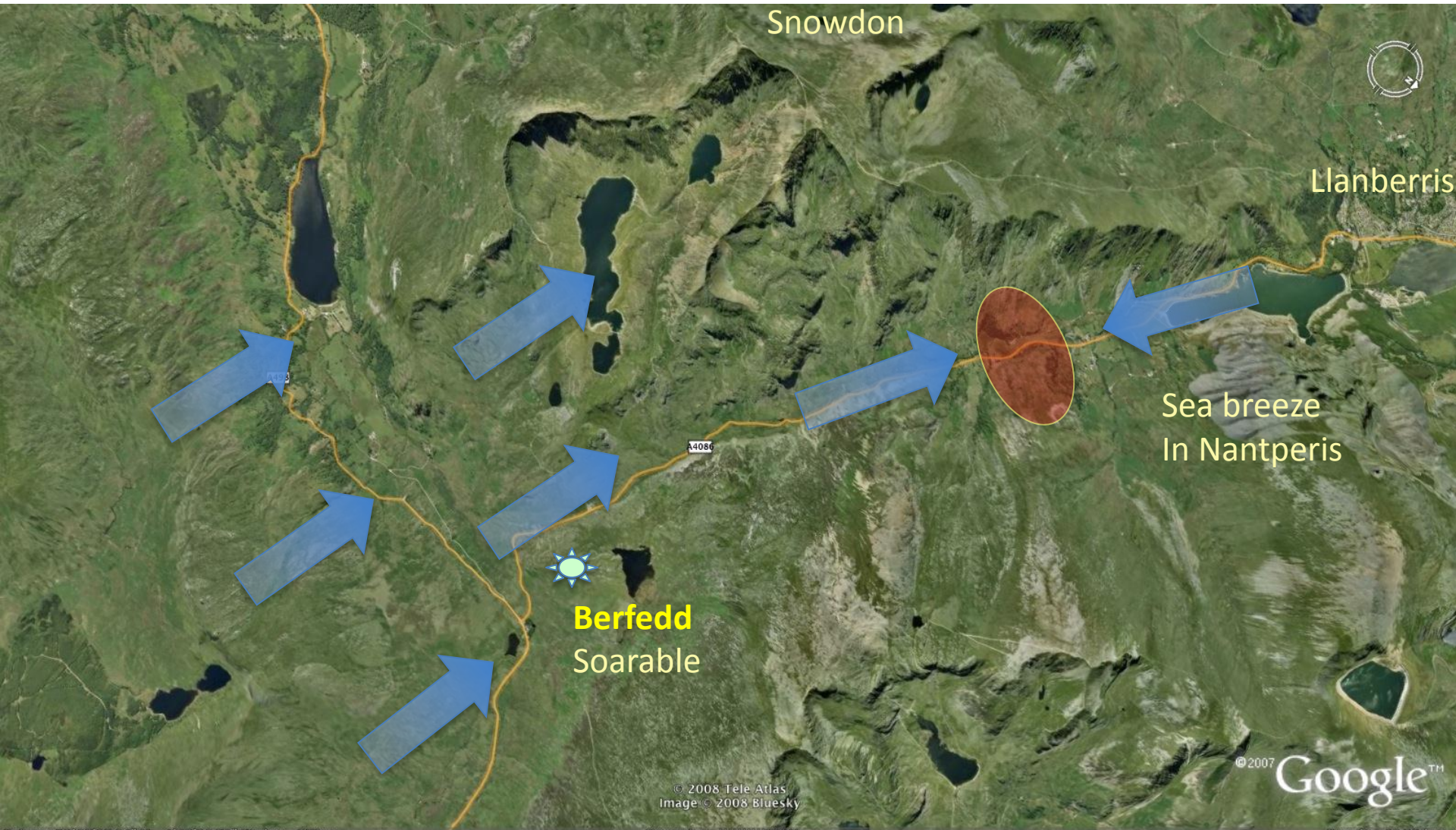
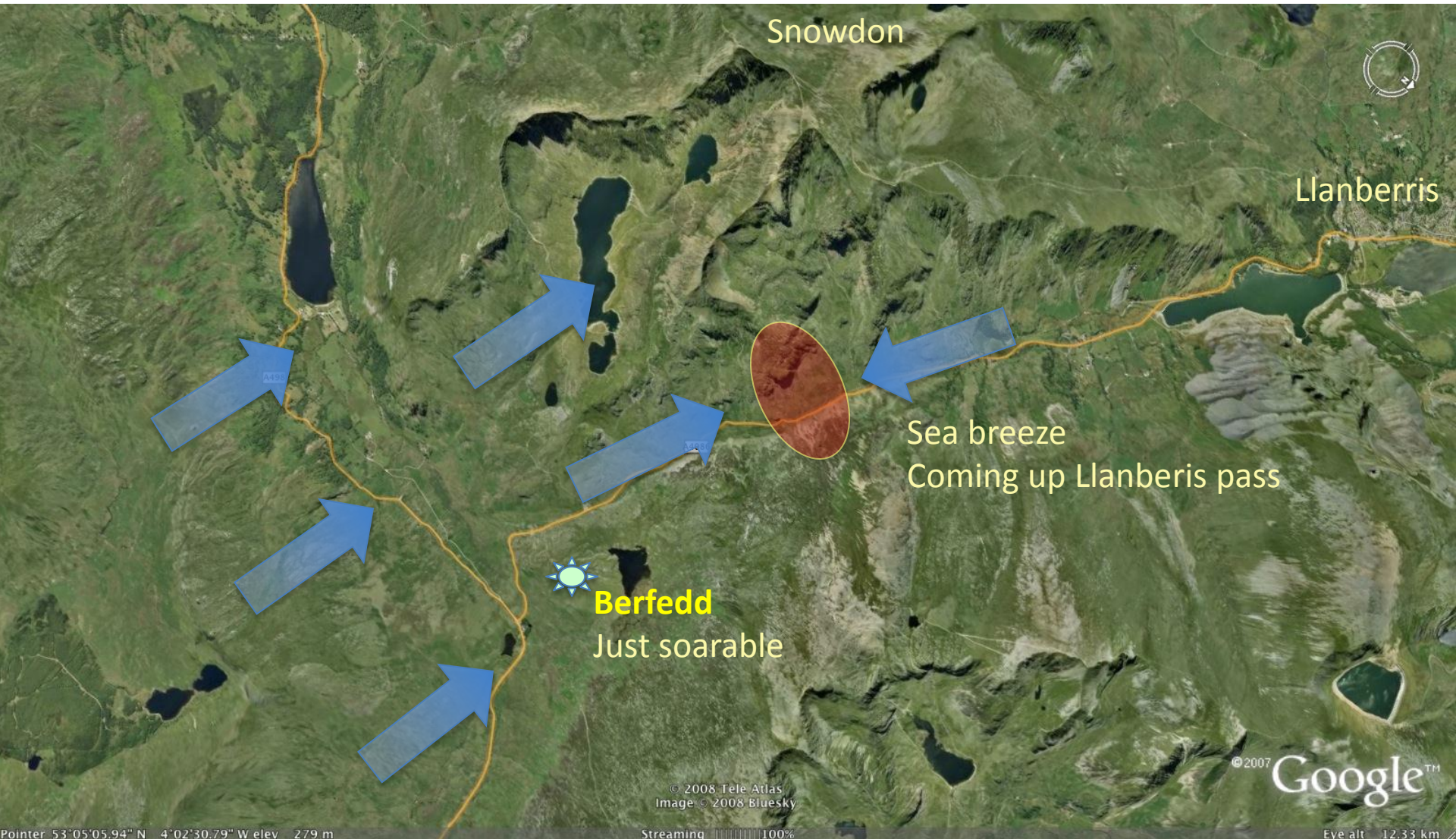


Convergence zone (shown by the red circle) ~12:00 on a typical sea breeze day with ~7mph prevailing wind from the East.



Convergence zone (shown by the red shape) ~12:30 on a typical sea breeze day with ~7mph prevailing wind from the East.



Convergence zone (shown by the red circle) ~13:00 on a typical sea breeze day with ~7mph prevailing wind from the East.



Convergence zone (shown by the red circle) ~14:00 on a typical sea breeze day with ~7mph prevailing wind from the East.

